

Duo 2 WiFi

Smart 4K Dual-Lens WiFi Camera with 180° Panoramic View



Dual-Lens

Combines two lenses into one view with no dead ends.



180° Panorama

Covers a larger area with a 180° ultra-wide viewing angle.

4K

4K UHD

Reveals much finer details with stunning 4K clarity.



Smart Detection

Get notified when a person, vehicle, or animal is detected.



Color Night Vision

Captures full-color images at night with its spotlights on.



Two-Way Audio

Talk to anyone in front of the camera in real-time.



Dual-Band WiFi

Supports 5/2.4 GHz bands for better range and faster speed.



IP66 Weatherproof

Works perfectly indoors or outdoors no matter the weather.



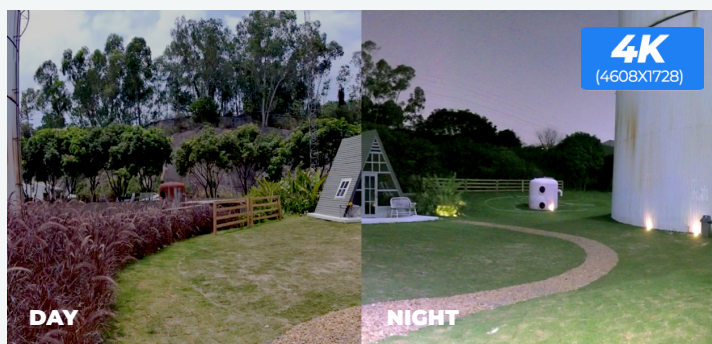
Multiple Storage Options

Save videos to a microSD card, Reolink NVR, or FTP server.



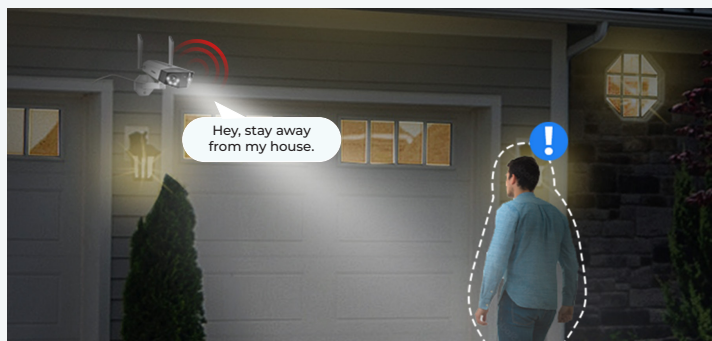
Double Your Vision

The dual-lens camera can stitch two views into one with no gap. It covers a larger area with a 180° panoramic view.



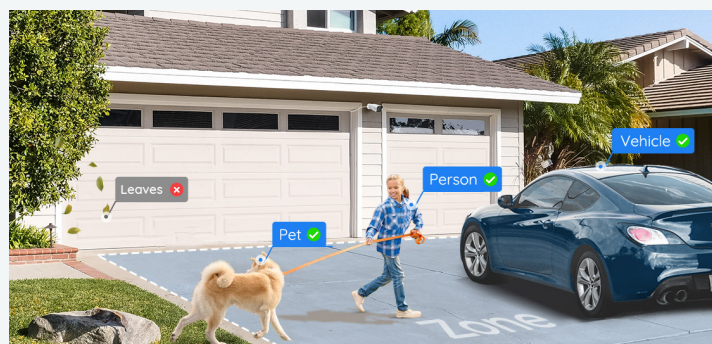
Full-Color 4K Videos, Day or Night

Get razor-sharp, full-color recordings in 4K clarity day or night. Never miss any important details.



All-Round Deterrence to Intruders

Deter intruders effectively with spotlights on or the siren activated. Or scare off unwanted guests using two-way audio.



Know What's Happening

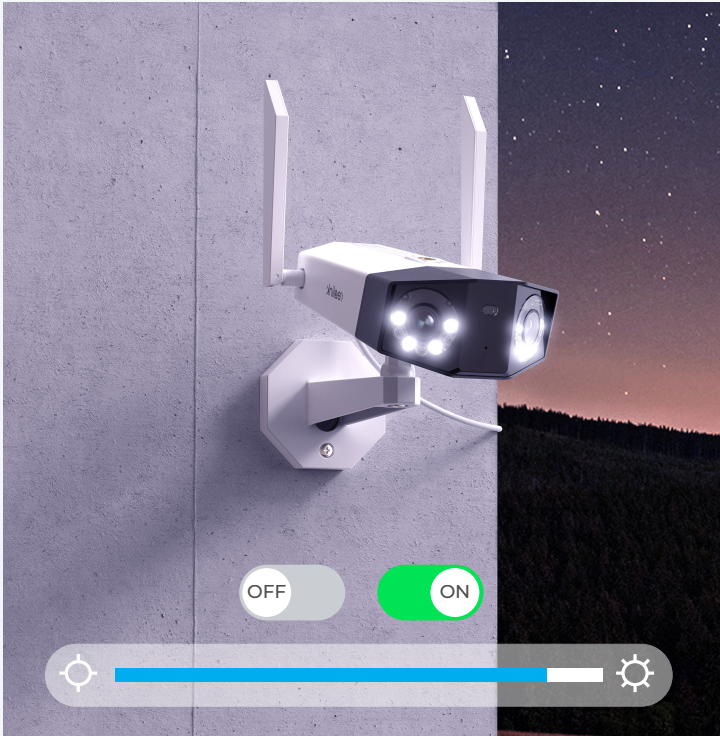
Get alerts only when people, vehicles, and animals are detected, reducing false alarms caused by shadows and flying insects.



Flexible Storage Options

Save your recordings to a microSD card of up to 256 GB, Reolink NVR, or FTP server. Choose as you like.

Gallery



One App/Client for All Control

Stay connected to your home or business anytime, anywhere.



Privacy in Your Hands

We made it a priority to ensure that your privacy is protected and your data is for your eyes only.



Model	Duo 2 WiFi	
Video & Audio	Image Sensor	1/2.7" CMOS Sensors
	Video Resolution	Default: 4608X1728 (8.0 megapixels) at 20 fps
	Lens	f = 3.2 mm fixed, F = 2.0
	Video Format	H.265
	Field of View	Horizontal: 180° Vertical: 60°
	Day & Night	Auto-switching with IR cut filter
	Infrared Night Vision	30 meters (LED: 6pcs/20mil/850nm)
	Color Night Vision	Spotlight: 8pcs/5W/6500K/560 Lumens
	Audio	Two-way audio
Power	DC Power	DC 12.0V=2A, <15W
Interface	Power	DC power port
	System	Reset button
	Ethernet	One 10M/100Mbps; RJ45
	Storage	microSD card slot (Max. 256GB)
	Audio	Built-in microphone and speaker
Software Features	Frame Rate	Mainstream: 4fps - 20fps (default: 20fps) Substream: 4fps - 20fps (default: 10fps)
	Code Rate	Mainstream: 3072Kbps -10240Kbps(default: 5120Kbps) Substream: 256Kbps - 2048Kbps(default: 1024Kbps)
	Browser Supported	Edge, Chrome, Firefox, Safari
	OS Supported	PC: Windows, Mac OS; Smartphone: iOS, Android
	Smart Alarm	Motion detection; person detection; vehicle detection; animal detection
	Record Mode	Motion-triggered recording (default); scheduled recording; 24/7 recording
	Protocols & Standards	HTTPS, SSL, TCP/IP, UDP, HTTP, IPv4, UPnP, RTSP, RTMP, ONVIF, SMTP, NTP,DHCP, DNS, DDNS, FTP, P2P
	Maximal User Access	20 Users (1 admin account & 19 user accounts); Support up to 12 simultaneous video streams (10 substreams & 2 mainstreams)
	Work with	Google Assistant
Wi-Fi	Wireless Standard	IEEE 802.11a/b/g/n
	Operating Frequency	2.4GHz/5GHz
	Wireless Security	WPA-PSK/WPA2-PSK
Working Environment	Temperature	Operating temperature: -10°C~+55°C (14°F~131°F)
	Humidity	Operating humidity: 10% ~ 90%
	Waterproof	IP66
Size & Weight	Dimension	195x103x56 mm
	Weight	700g
Warranty	Limited Warranty	2-year limited warranty. For support, visit https://support.reolink.com/hc/en-us/



- | | | | | | |
|---|------------------|---|--------|---|-----------------|
| 1 | Antenna | 2 | Lens | 3 | Daylight Sensor |
| 4 | Spotlight | 5 | IR LED | 6 | Mic |
| 7 | Mounting Bracket | | | | |



- | | | | | | |
|---|-------------------|---|--------------|---|---------|
| 1 | microSD Card Slot | 2 | Reset Button | 3 | Speaker |
|---|-------------------|---|--------------|---|---------|



- 1 Power
- 2 Network
- 3 Waterproof Lid



- 1 You can mount the cam on the wall or on the ceiling.
- 2 You can loosen the screw to adjust the cam in any direction, and then tighten the screw to fix the cam.

What's in the Box

Reolink Duo 2 WiFi (x1)	Power Adapter 12V/2A (x1)	Antennas (x1)
Mounting Plate (x1)	Mounting Hole Template (x1)	Quick Start Guide (x1)
1m Network Cable (x1)	4.5m Power Extension Cable (x1)	Pack of Screws (x1)
Surveillance Sticker (x1)	Screwdriver (x1)	Waterproof Lid (x1)

Best Companion



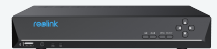
Junction Box B10



microSD Card



Power Extension Cable



Reolink NVR



Waterproof Lid

Download Free Reolink App & Client



Learn more: <https://reolink.com/software-and-manual/>



Terms and Privacy

Terms and Privacy: Use of the product is subject to your agreement to the Terms of Service and Privacy Policy at reolink.com. Keep out of reach of children.

Limited Warranty

Limited Warranty: This product comes with a 2-year limited warranty. Learn more: <https://reolink.com/warranty-and-return/>